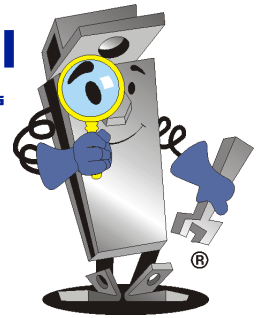


Project  
**FOCUS**

**UNISTRUT HAWAII**

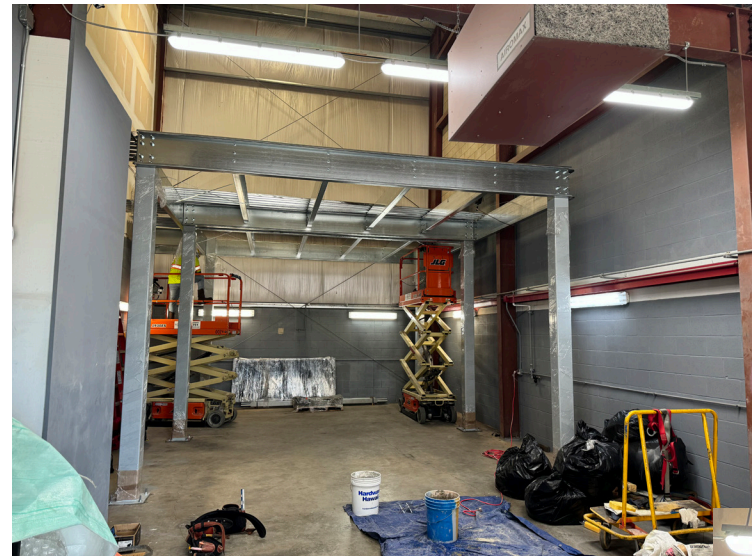
a division of **GP** Roadway Solutions



# Mezzanine Solution for an Autobody Repair Shop

## Design Challenge:

For 35 years, a locally owned autobody repair shop in Central Oahu has been restoring damaged vehicles to factory paint specifications. As their business expands, they struggle with inefficient storage for replacement parts, which clutters space needed for ongoing projects and hampers productivity. We were tasked with devising a more efficient storage solution for future project parts, keeping them out of the way of current jobs.



## Design Criteria:

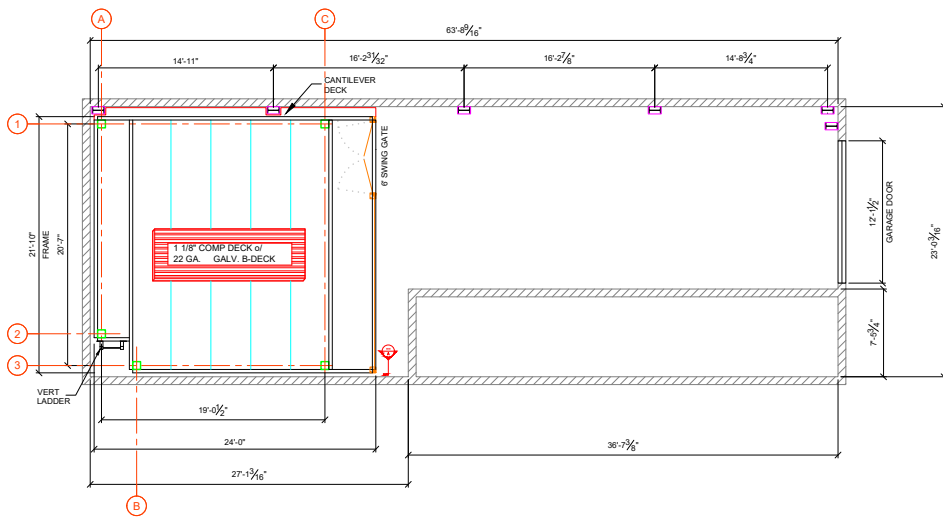
The company operates in a warehouse with a tall ceiling. They asked us to design a sturdy, freestanding storage system for heavy autobody parts, utilizing the unused vertical space. The system needed to support large loads on six columns, allowing vehicles to be worked underneath. The system should not attach to the building and be easy to disassemble if needed.



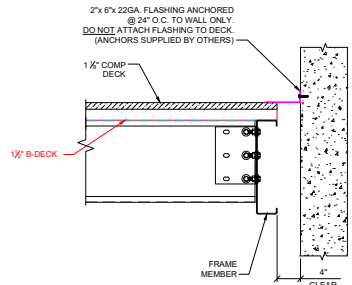
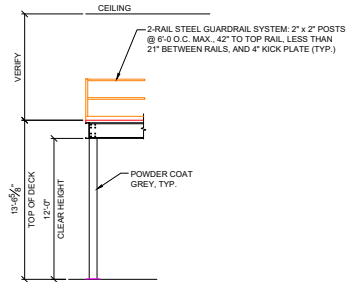
## Unistrut Hawaii Solution:

We provided an **FCP Free Space Mezzanine** with the **FCP ConnectRite** cold-formed steel connection system. This innovative, moment-resistant system maximizes load capacity and open floor space while meeting seismic requirements. The efficient column spacing optimizes space beneath the mezzanine and offers substantial storage above, allowing the client to relocate their inventory without needing more real estate, avoiding extra costs and disruptions.





**DECK FRAMING PLAN**  
 516 S.F.  
 16" FRAME  
 8" x 8" COLUMNS  
 14" x 14" x 1/2" BASEPLATES



**FLASHING TO WALL DETAIL**  
 SCALE: 1/2"=1'-0"  
 APPROVED FOR ENGINEERING

- PLEASE VERIFY THE FOLLOWING:  
 (Check boxes to verify)
- Existing (E)
  - Location of walls and/or other obstructions (i.e. Roll-up door canisters, Electrical panels)
  - Dimensions:
    - Overall Dimensions
    - Top of Deck Height
    - Clear Height
    - Column Locations
    - Stair Location(s)
    - Guardrail Location
    - Gate(s)
- \*PLEASE NOTE: Verify all reference dimensions to (E) obstructions.

AS NOTED: \_\_\_\_\_ DATE: \_\_\_\_\_

NO CHANGES: \_\_\_\_\_ DATE: \_\_\_\_\_

The signature above indicates that all dimensions, column locations & finishes are correct. Should any change be required after the date above, additional costs may be incurred and written change order required.

FINISH SCHEDULE	
COMPONENT:	FINISH:
Frame:	Galvanized
Columns:	Powder Coat: Grey
Guardrail:	Galvanized
Stringers:	Galvanized
Treads:	Galvanized
Handrail:	Galvanized

**NOTE: DRAWING FOR ENGINEERING ONLY  
 NOT FOR CONSTRUCTION.**



**UNISTRUT HAWAII**

a division of **GP Roadway Solutions**

Contractor License: AC 10998

660 Mapunapuna St.  
 Honolulu, HI 96819  
 (808) 836-1751  
 UnistrutHawaii.com

Talk to a Unistrut Hawaii representative today for a solution to your design challenge.

FCP Mezzanines are installed by Unistrut Hawaii.



**MEZZANINES**  
 Creative Steel Solutions