

Mezzanine Solution for an Industrial Warehouse



Design Challenge:

A local medical equipment supplier with over 40 years of experience faced storage issues as their business expanded. Their original location couldn't meet growing storage demands, leading them to acquire a second warehouse. Traditional rack shelving systems were inadequate, limiting capacity and causing inefficiencies. The client needed a cost-effective solution to enhance storage capacity and operational efficiency.

Design Criteria:

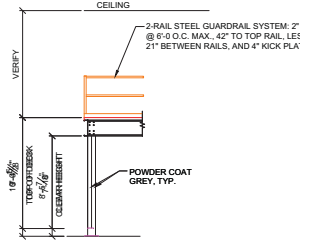
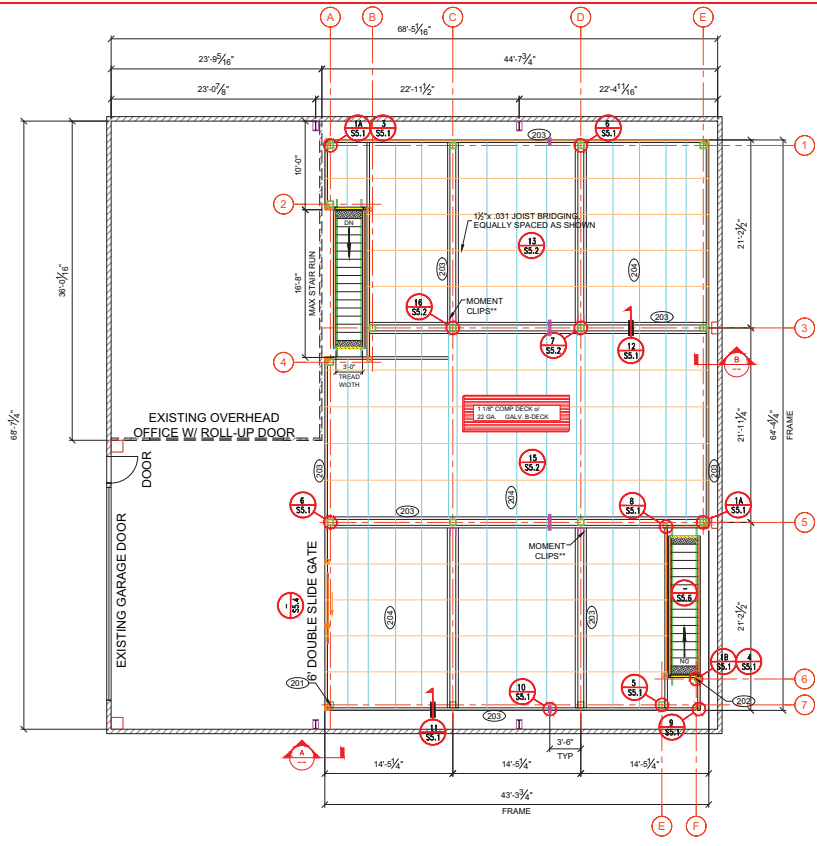
The customer needed a storage system with minimal columns to accommodate large pieces of equipment like electric beds. The design required wide aisles for easy movement of equipment and forklifts, and a second-floor mezzanine with a gate for loading inventory from below. Efficient use of the existing warehouse was crucial to maintaining the Honolulu base for delivery operations.



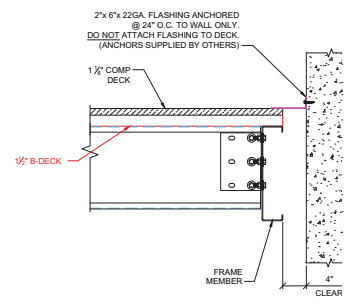
Unistrut Hawaii Solution:

The FCP Free Space Mezzanine, with the FCP ConnectRite cold-formed steel connection system, was the ideal solution. This innovative, moment-resistant system maximizes load capacity and open floor space while meeting seismic requirements. Strategic column spacing optimizes space beneath the mezzanine and provides substantial storage above. By relocating shelved stock to the mezzanine, the client could store rental bed inventory on the warehouse floor, significantly increasing storage capacity. This solution added square footage without needing more real estate, avoiding extra costs and operational disruptions.

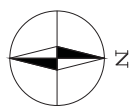




A VIEW
SCALE: 1/2"=1'-0"



B FLASHING TO WALL DETAIL
SCALE: 1/2"=1'-0"



DECK FRAMING PLAN

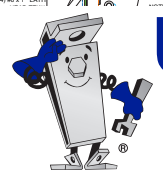
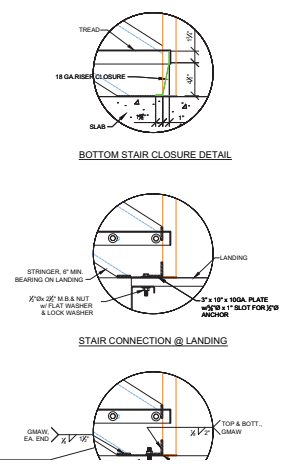
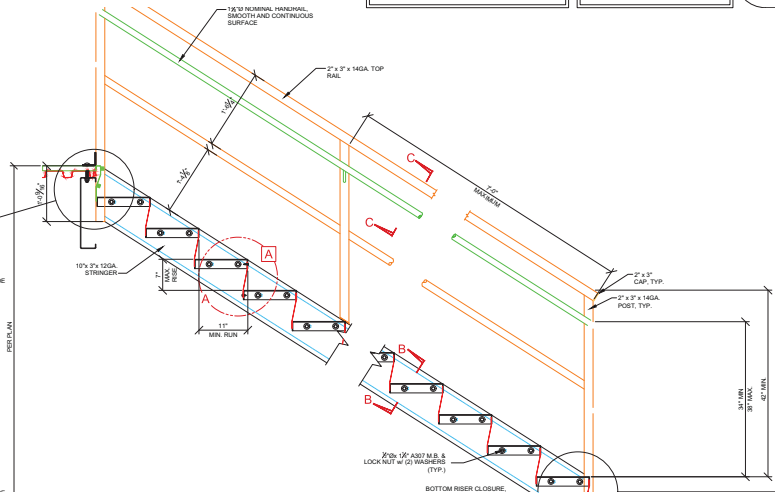
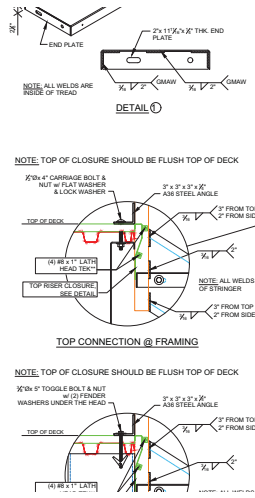
- 201 HSS 8" x 8" x 1/4" COL. TYP.
- 202 HSS 4" x 4" x 1/4" COL. TYP.
- 203 16" x 3 1/2" 10 GA. TYP.
- 204 16" x 3 1/2" 12 GA. JOIST

FINISH SCHEDULE	
COMPONENT:	FINISH:
Frame:	Galvanized
Columns:	Powder Coat Grey
Guardrail:	Galvanized
Stringers:	Galvanized
Trails:	Galvanized
Handrail:	Galvanized

- PLEASE VERIFY THE FOLLOWING:
(Check boxes to verify)
- Existing (E)
 - Location of walls and/or other obstructions (E)
 - Roll-up door camblers, Electrical panels
 - Dimensions:
 - Overall Dimensions
 - Top of Deck Height
 - Clear Height
 - Column Locations
 - Stair Location(s)
 - Guardrail Location
 - Gates(s)
- PLEASE NOTE: Verify all reference dimensions to (E) obstructions.

AS NOTED: _____ DATE: _____
NO CHANGES: _____ DATE: _____
The signature above indicates that all dimensions, column locations & finishes are correct. Should any change be required after the date above, additional costs may be incurred and written change order required.

NOTE: DRAWING FOR ENGINEERING (NOT FOR CONSTRUCTION.)



UNISTRUT HAWAII

a division of **GP Roadway Solutions**
Contractor License AC 10998

Talk to a Unistrut Hawaii representative today for a solution to your design challenge.

FCP Mezzanines are installed by Unistrut Hawaii.



MEZZANINES
Creative Steel Solutions

660 Mapunapuna St.
Honolulu, HI 96819
(808) 836-1751
UnistrutHawaii.com